

WEEKLY WARRIOR

Official Newsletter of Philomath High School



Barrett wrestles against Japanese All-Star

PHS wrestler Riley Barret competed against a member of the Japanese All-Star Team at Harrisburg High School on Saturday, Jan. 6.

Riley went the distance and lost 10-1. This was a great honor for him to represent Oregon and to compete with the world's best!

Call to excuse weather absences

Please remember with the weather changing to call your students out if they are being affected by weather. Students will need to be excused by a parent or guardian if they are late due to weather-related situations. We hope to see all students at school as much as possible, but understand that due to unsafe driving conditions this may be a challenge for drivers.

For more information about school closures, see page 2.

Students of the Month for November and December



Congratulations to our Students of the Month from left, Giana Lusardi, sophomore, November; Mayson Wallace, sophomore, December; and Aviry Hammond, junior, November. Not pictured are JJ Lewis, junior, December; and Mase Stearns, senior, December.

Graduate EVERY student and transition each of them into a job, training, or college.



Follow us on
Instagram
@phswarriornation

Dates to Remember

January

- 15 No School - Holiday
- 16 Chat with the Principal - 5 pm
- 26 No School

February

- 3 Court of Hearts Dance - 7:30 pm
- 16 Possible Inclement Weather Make-Up Day
- 19 Possible Inclement Weather Make-Up Day
- 28 PSD Band Concert - 5:30 pm

From ASB

By ASB Co-president Lorelei Schell

This week ASB began the court voting process for the Court of Hearts Dance. The dance will take place on Feb. 3 at 7:30 pm. Be sure to find some people to go with and get your outfits together!

The Special Olympics Polar Plunge will happen on Feb. 17. Please make sure you are signing up on Philomath High School's team. Let's have the biggest group plunge into the river this year. Sign up and join the team on the [Polar Plunge website!](#)



How to find out about school closures for winter weather

When school is closed for inclement weather, the district has multiple ways of informing families:

School Messenger

- Parents/ guardians will automatically be added to this communication system with the e-mail contact information provided at registration.
- SchoolMessenger also has a text feature. Please be sure to opt-in to receive texts. ("Yes" to 67587)

Flash Alert Messaging

- This service allows anyone to opt-in to receive school emergency or snow closure information for the Philomath School District.
- To register, visit www.flashalert.net and click on the 'Eugene/ Springfield/ Roseburg/ Albany/ Corvallis' region. Select 'Benton Co. Schools' followed by 'Philomath School District'.

Online:

Parents can also check the school district website, Facebook page or Instagram.



FAFSA is open, help available

The 2024-2025 FAFSA is now open. You can find the [application here](#).

Students need a verified account username and password, the FSA ID prior to beginning the FAFSA form. Create an [FSA ID here](#).

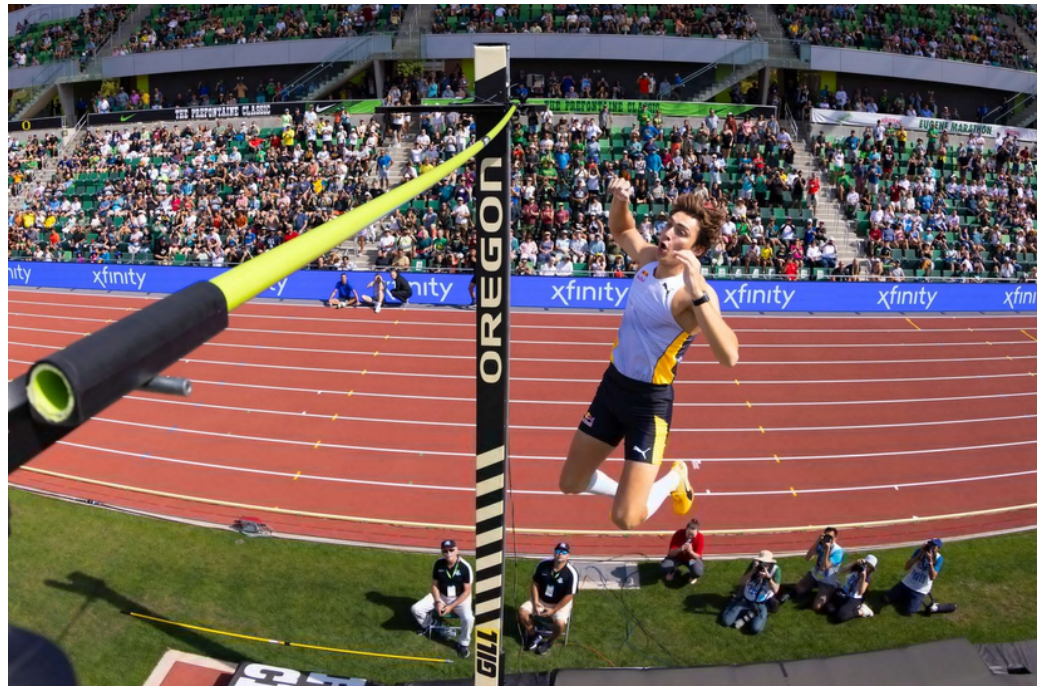
When filling out the FAFSA application, students will need a name, date of birth, Social Security number and email address of the contributor (typically a parent) who will provide income information.

Help is available in the PHS library on Tuesdays with Levi Pagel, LBCC high school outreach specialist, or through the senior counselor, Kim StClair.

PHS alumnus wins photo award

Logan Hannigan-Downs, PHS Class of 2020, won the Wanda Diamond League Photo of the Year for this photograph he took at the 2023 Prefontaine Classic in Eugene.

The photo shows Armand Duplantis' reaction after setting a new men's world record in pole vault. The Diamond League is an annual series of elite track and field competitions comprising fifteen of the best international invitational track and field meets. Congratulations, Logan!



Important dates for seniors

February 15:

OSAC Scholarships Early Bird deadline

March 1:

OSAC Scholarships deadline

March 20:

Benton Community Foundation Scholarships due

Register now for 2024 Senior All Night Party

Senior parents, please go to the following [link](#) to fill out the Google Form to register your student for this year's Senior All Night Party.

If you have any questions, contact philomathseniorparty@gmail.com

Nonviolent Verbal Crisis Intervention



PARENTS IN LINN, BENTON & LINCOLN COUNTIES

Are you in the middle of a power struggle tornado with your youth? Learn how to recognize and respond to everyday crisis situations. You will gain skills in verbal de-escalation, learn how to identify and prevent disruptive behaviors, and understand the crisis process.

**To register, call (541) 974-5639
or email kelaslynn@gmail.com**

- Online & interactive classes
- \$25 gift card per class with participation (up to \$150 for the whole series)
- 6-week class series
- Join up through week two



JANUARY 16, 23, 30

FEBRUARY 6, 13, 20



**TUESDAYS
6-8 PM**

cripple verb
I make
damage so
crisis noun (p
an importa
situation.
crisp adject

About the Instructor

Kela Lynn is a CPI certified trainer with 25 years of personal and professional experience in crisis intervention. Kela's hope is you walk away with a skill set, humor and a deep breath out.



Kela Lynn, LCSW, MSW
TRANSFORMING RELATIONSHIPS



InterCommunity
Health Network CCO

Parenting
Success
NETWORK®



CTE SIGNING DAY

LBCC Career and Technical Education (CTE) Signing Day is a celebration of high school seniors and incoming LBCC students signing letters of intent to guarantee a spot and join next fall's highly competitive college CTE programs.

CTE PROGRAMS

- ⚙️ Accounting Technology
- ⚙️ Animal Technology
- ⚙️ Automotive Technology
- ⚙️ Computer Aided Drafting & Design
- ⚙️ Culinary Arts, Nutrition & Food Systems
- ⚙️ Early Childhood Education
- ⚙️ Heavy Equipment/Diesel Technology
- ⚙️ Industrial Pipe Trades, Fitting & Welding
- ⚙️ Machine Tool Technology
- ⚙️ Mechatronics
- ⚙️ Non-Destructive Test & Evaluation
- ⚙️ Phlebotomy
- ⚙️ Visual Communications
- ⚙️ Welding & Fabrication Technology

SCHOLARSHIPS

The LBCC Foundation awarded approximately \$500,000 in scholarships the 2022-23 academic year to LBCC students. Visit Scholarships for more information. Once students are admitted to LBCC, they are eligible to apply for scholarships during that cycle.

Sign up by
March 8th



[LINNBENTON.EDU/CTE](https://linnbenton.edu/cte)



ATHLETICS & ACTIVITIES

Boys basketball



Photo credit Philomath News

Boys basketball improves to 9-3 in non-conference play with a win against Estacada and are currently ranked No. 4 in state. They will play Roseburg tonight, Jan. 12, at 7 pm.

Girls basketball



Photo credit Philomath News

Girls basketball took down Estacada to secure a No. 2 ranking in state and an overall 9-2 record. They will play Corvallis High School tonight, Jan. 12, at 5:30 pm. It is an endowment game with admission of \$8 for adults, \$5 for students.

Athletic Information

Below you will find links to corresponding sites that will provide you with current information for athletics and activities.

[OSAA](#)

Game schedules; dismissal, departure, and return times; rosters; coaches contact information, etc.

[PHS Athletics Page](#)

Calendar, sports registration, athletic forms, athletic handbook and policies, athletic fundraisers, etc.

[Athletic.net](#)

XC and Track and Field Meet information

[Philomath News](#)

Local coverage about Warrior sports.

Please note that game times are subject to change, so please check schedules prior to scheduled events.

Mike Hood

Assistant Principal/Athletic Director

541-929-3211 ext: 1104

mike.hood@philomath.k12.or.us

Amanda Bauer

Athletics & Activities Administrative Assistant

541-929-2043

amanda.bauer@philomath.k12.or.us

Swimming



Photo credit Philomath News

The boys team came in first place and the girls team tied for first at their last meet.

Wrestling



Photo credit Philomath News

The wrestling team is doing very well and getting many individual wins. Most recently, in dual meets last weekend, they won against Cascade, North Marion and Cottage Grove.