

# Superintendent's Annual Report 2018

Philomath School District 17J

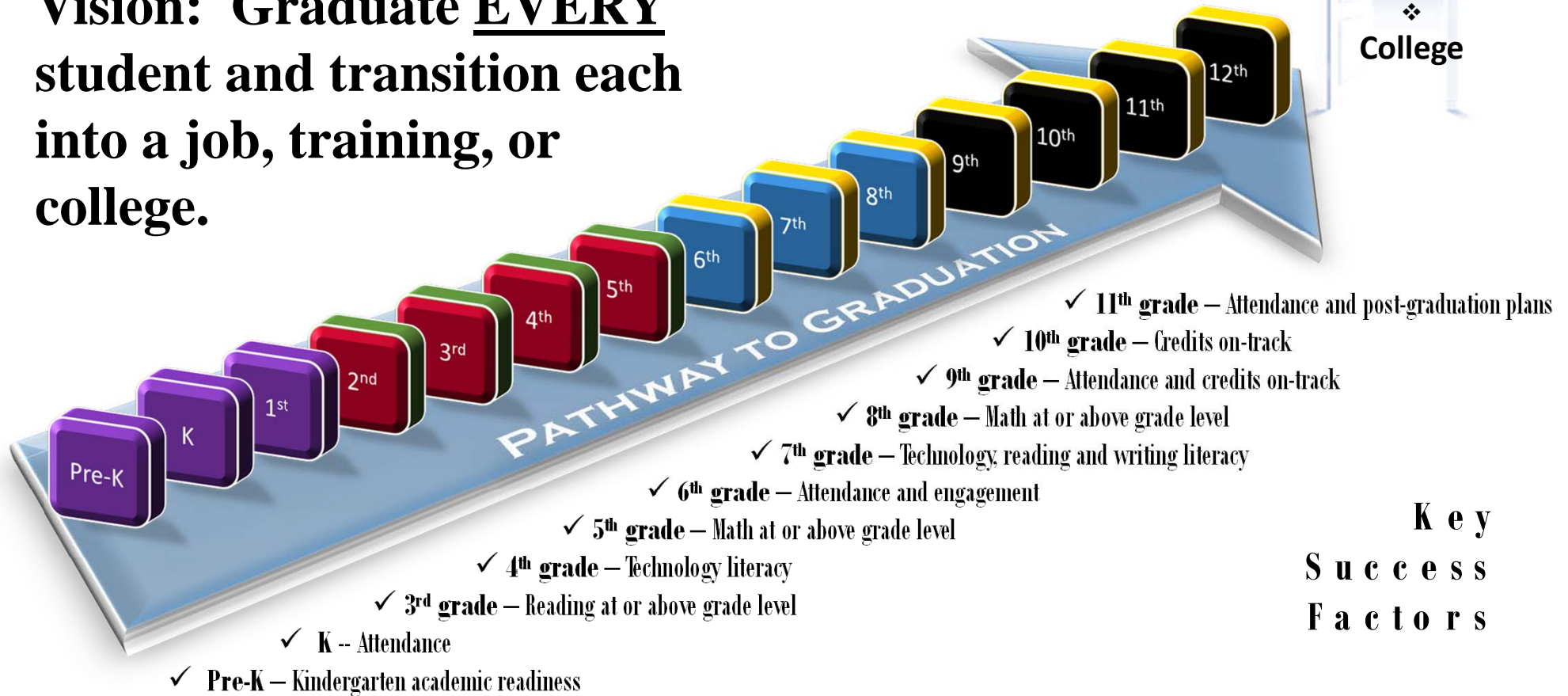
## 2017-18 Superintendent Goals

- Deploy the graduation progress indicator dashboard and review cycle.
- Institutionalize the Action and Investment Roadmap (AIR) to achieve the district vision.
- ⊖ Prepare for the operating levy ballot measure and the possible outcomes.
- Develop and deploy a community communications plan.
- Train students and staff in rights and responsibilities across the district.
- ⊖ Finalize the 5-year technology plan with funding identified.
- ⊖ Finalize the 30-year facility plan with resources outlined.
  
- ✦ Improve student reading mastery for grades 3-5.



Philomath School District

**Vision: Graduate EVERY student and transition each into a job, training, or college.**



## BUDGET WORK SESSION, 3/9/16 – PRIORITY OVERVIEW

---

### Prioritize Budget Plan to Align with Vision:

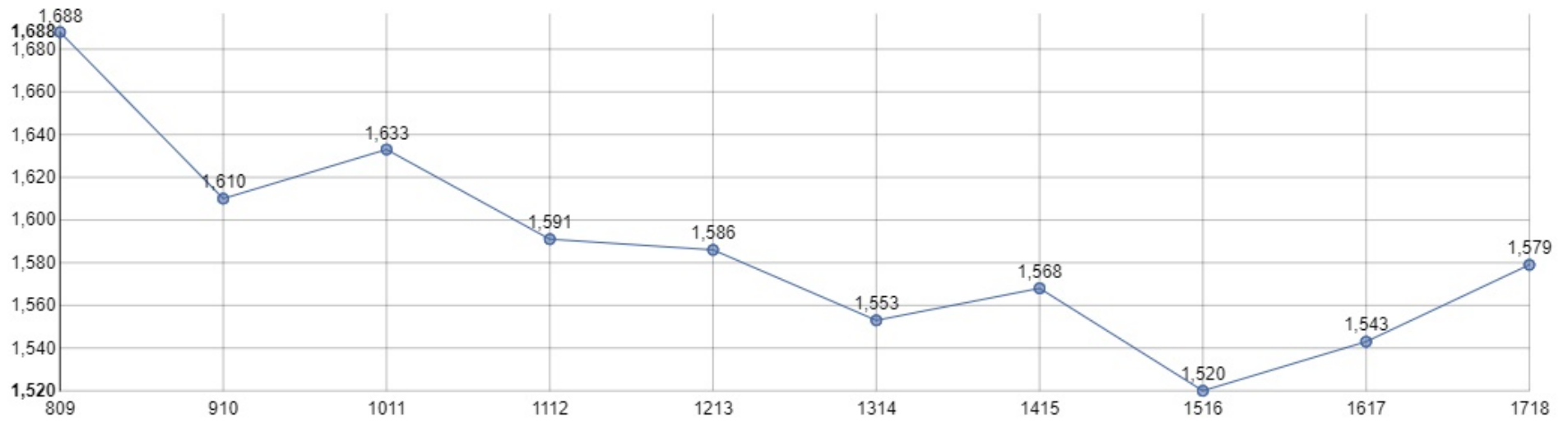
- Continue to strengthen core instruction through steady staffing, materials purchasing, and technology investment
- Sustain and expand intervention and alternative learning options for students:
  - Maintain special program investments
  - Purchase special education curriculum
  - Online learning expansion
  - Summer school implementation
- Respond to increased need for behavior supports
  - School counseling and school psychology
  - Highly trained personnel in classroom behavior supports
- Cease decay of investments
  - Preventative maintenance
  - Cycle out dated technology
  - Strategic staffing

### Methodology for Budget Planning:

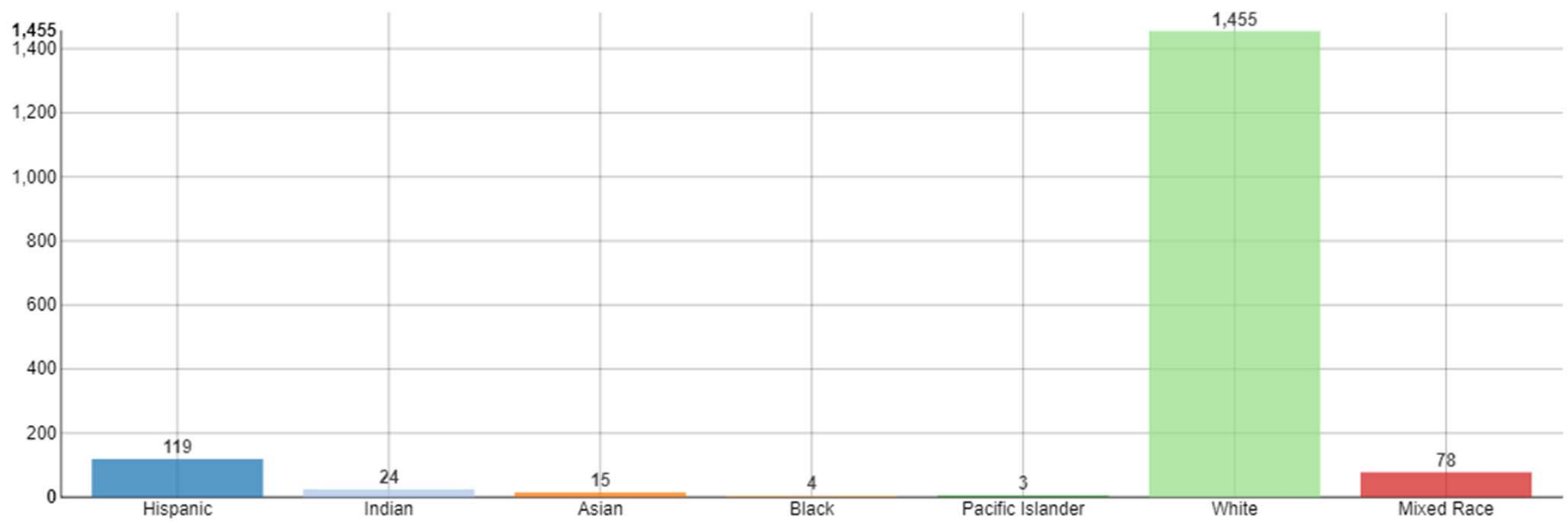
- Collaborate with District staff on prioritization
- Evaluate efficacy of current implementation to improve system
- Identify possible savings without compromising service to students
- Explore opportunities to support prioritized expansions

# Student Enrollment

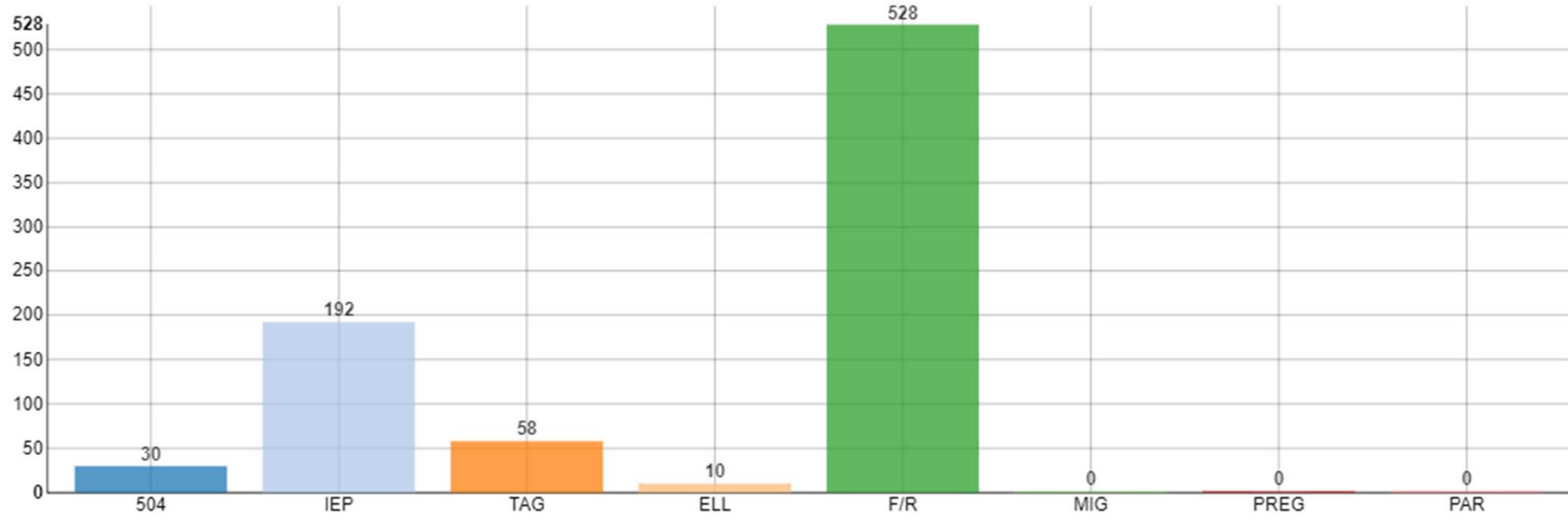
Enrollment by School Year for Selected District(s) and School(s)



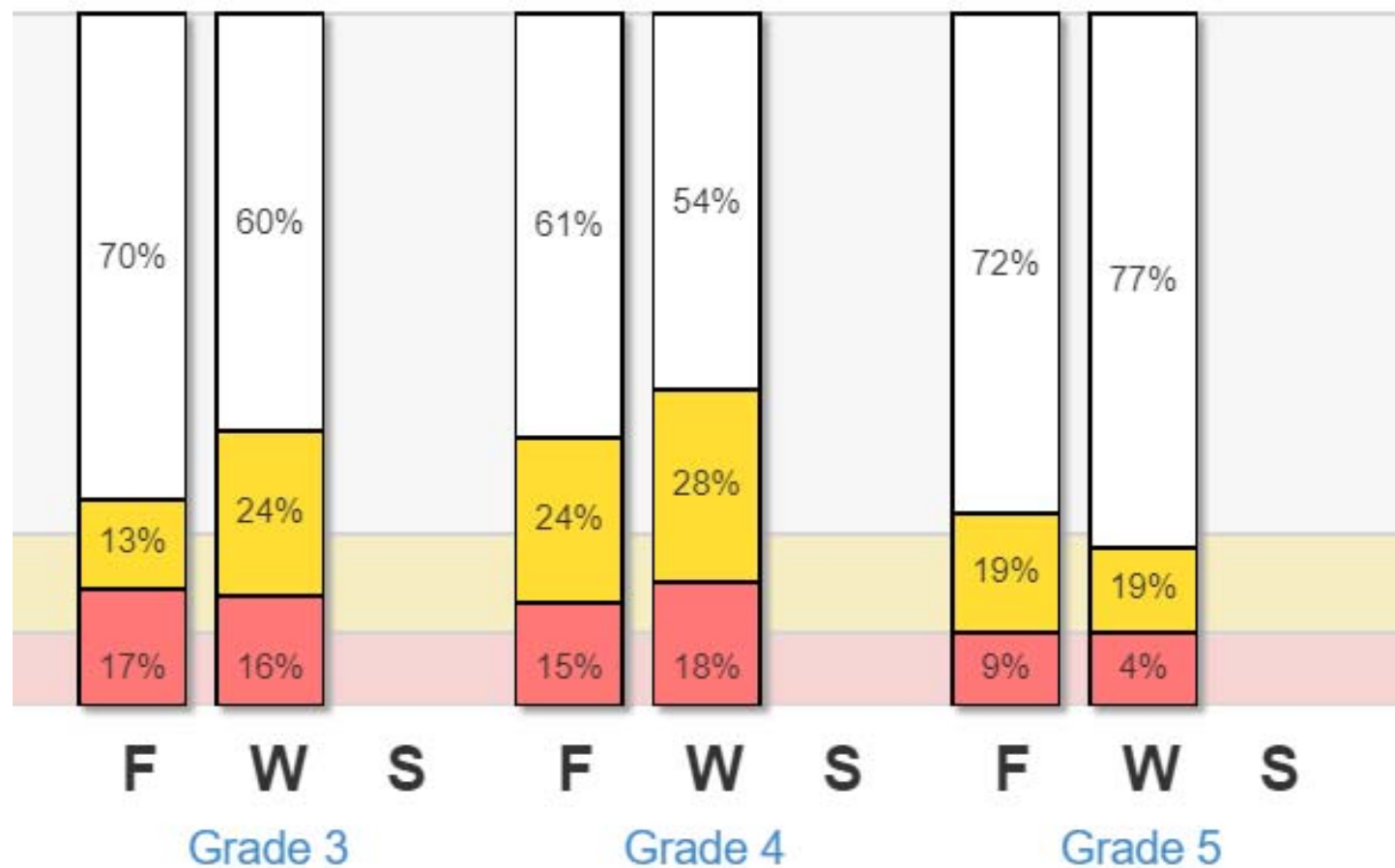
# Student Enrollment by Race



# Student Enrollment by Program

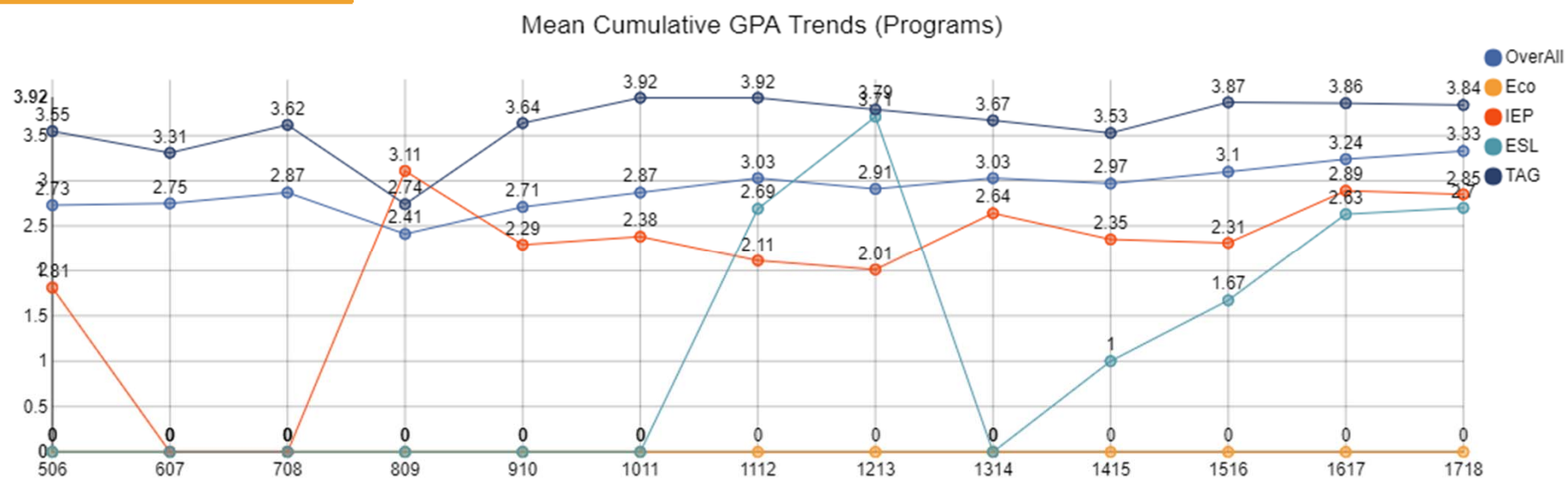


easyCBM  
Reading  
Interim  
Benchmarks  
2017-18



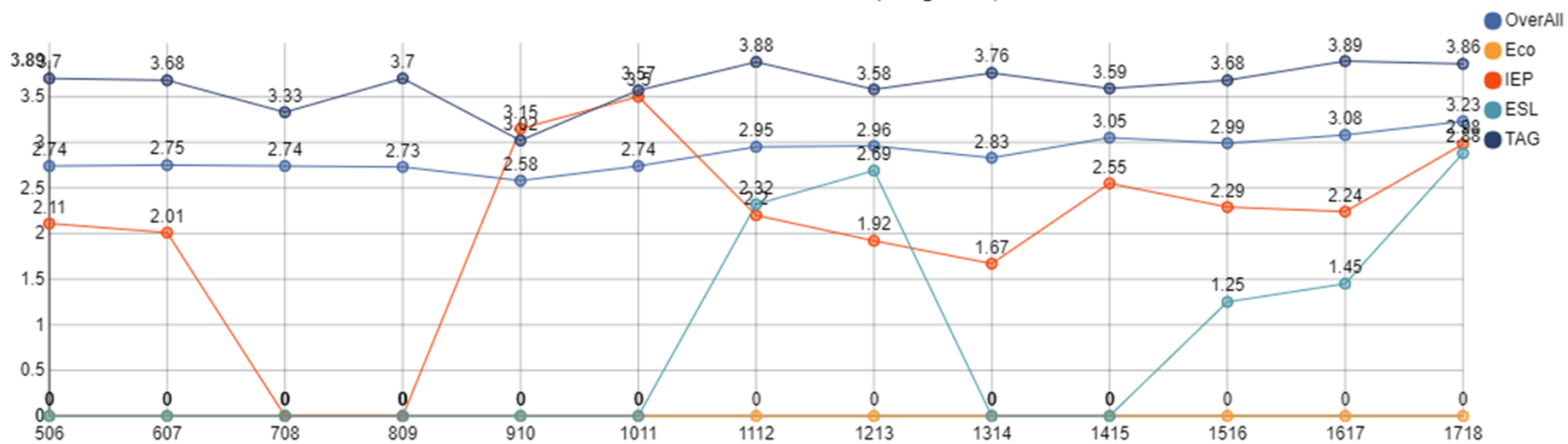


# 9<sup>th</sup> Grade GPA On-Track

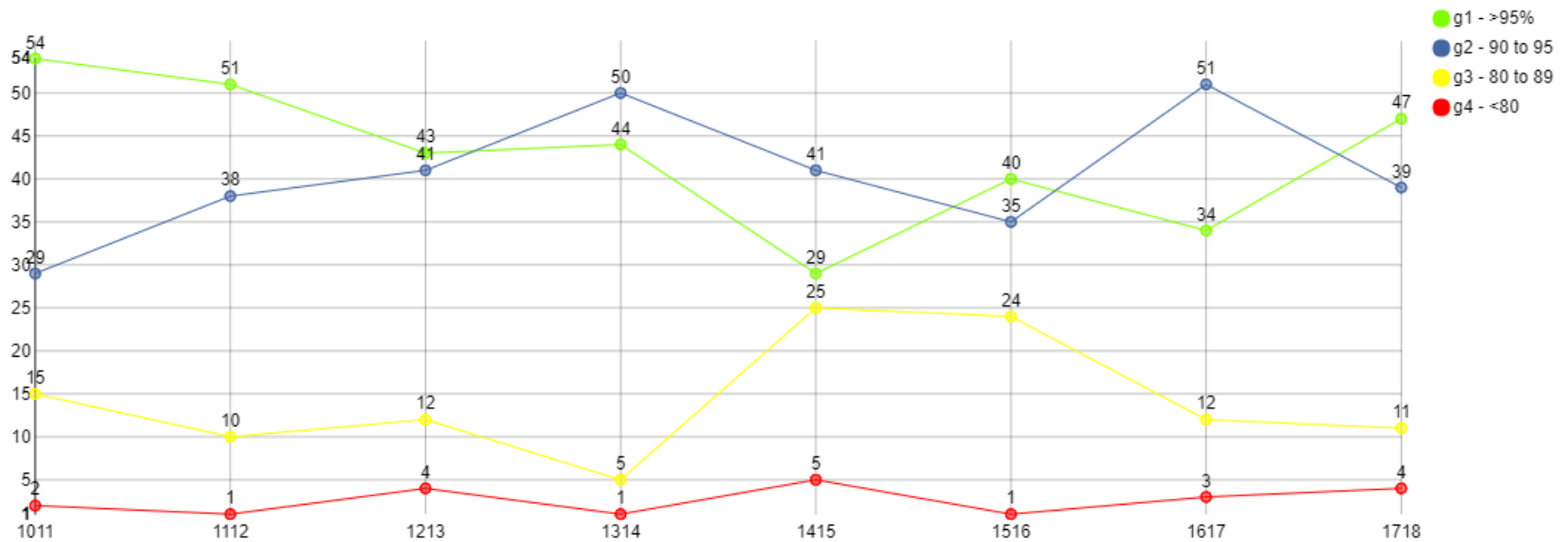


# 10<sup>th</sup> Grade GPA On-Track

Mean Cumulative GPA Trends (Programs)

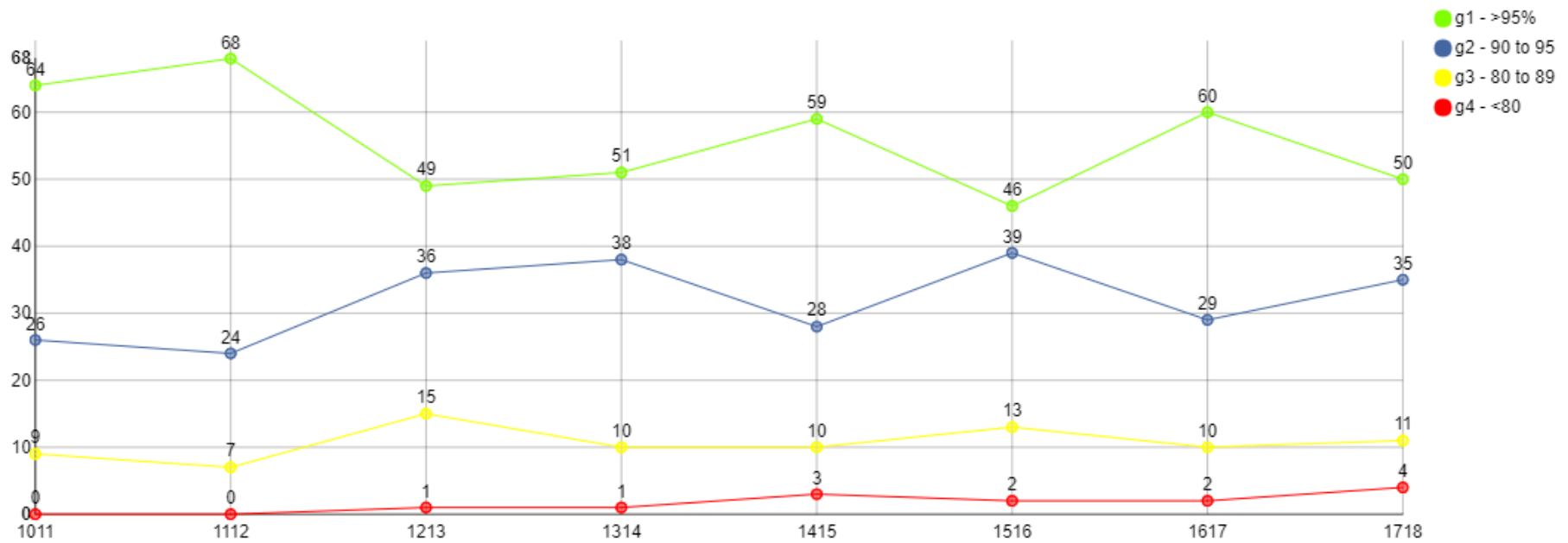


# Kindergarten Student Attendance



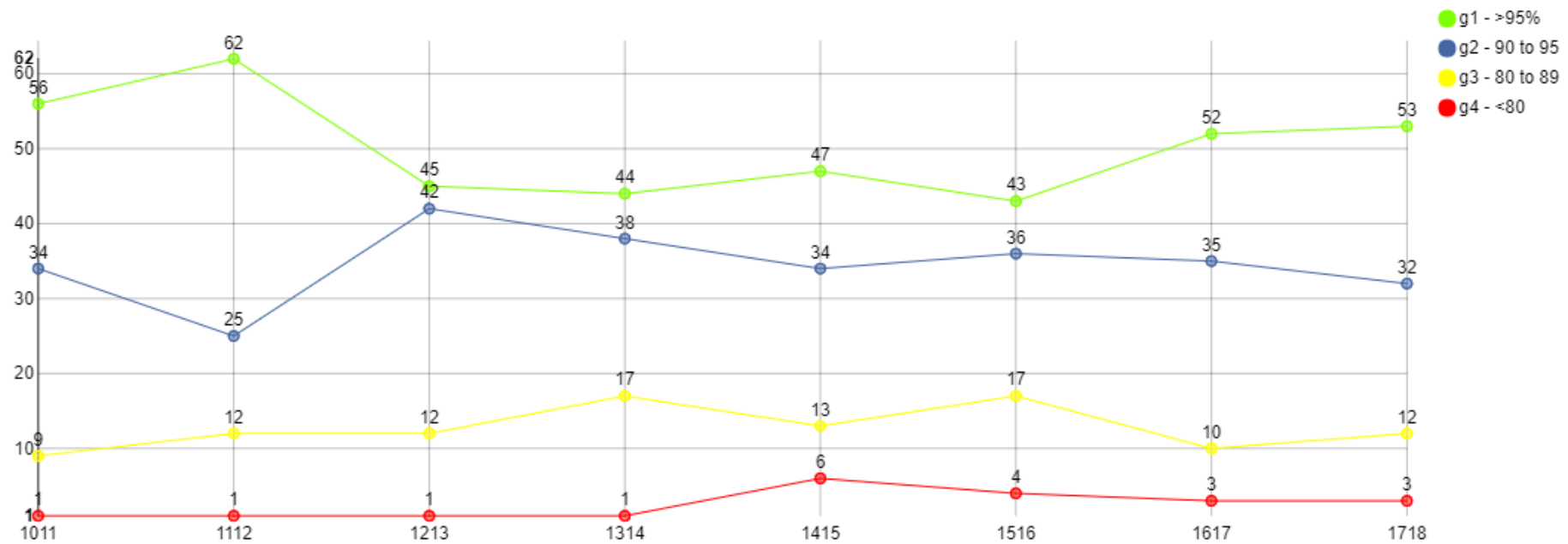
86% of K attend more than 90% of days

# 6<sup>th</sup> Grade Student Attendance



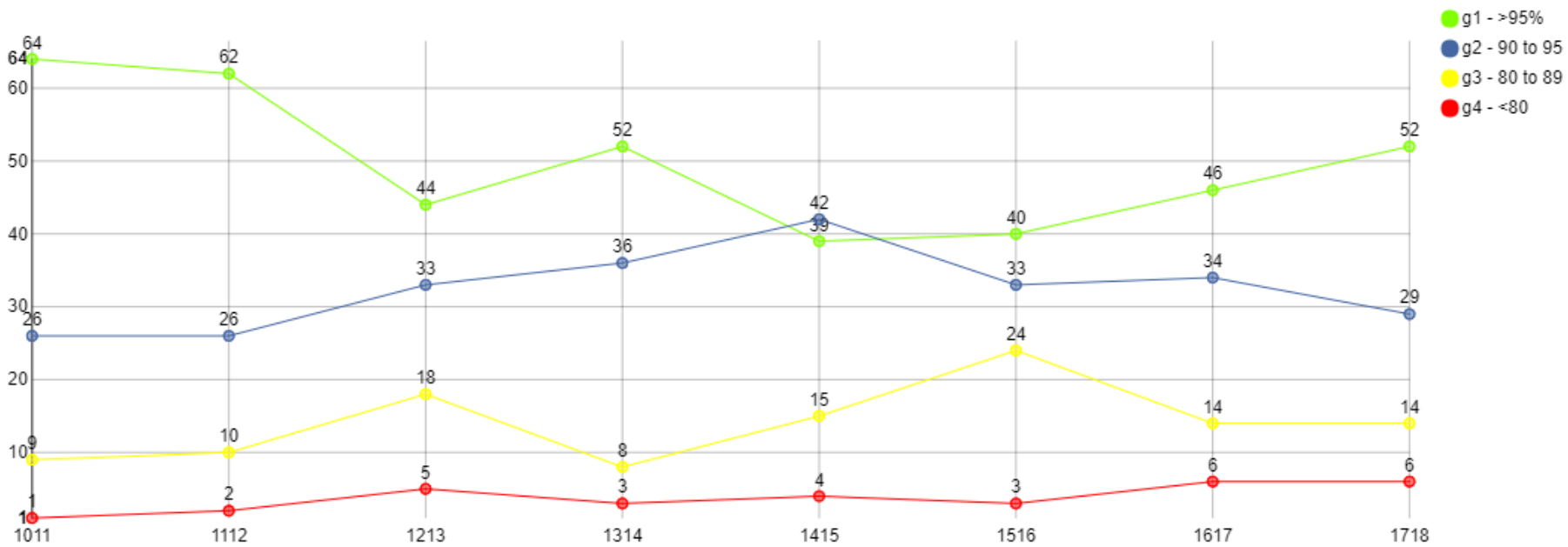
85% of 6<sup>th</sup> graders attend more than 90% of days

# 9<sup>th</sup> Grade Student Attendance



85% of sophomores attend more than 90% of days

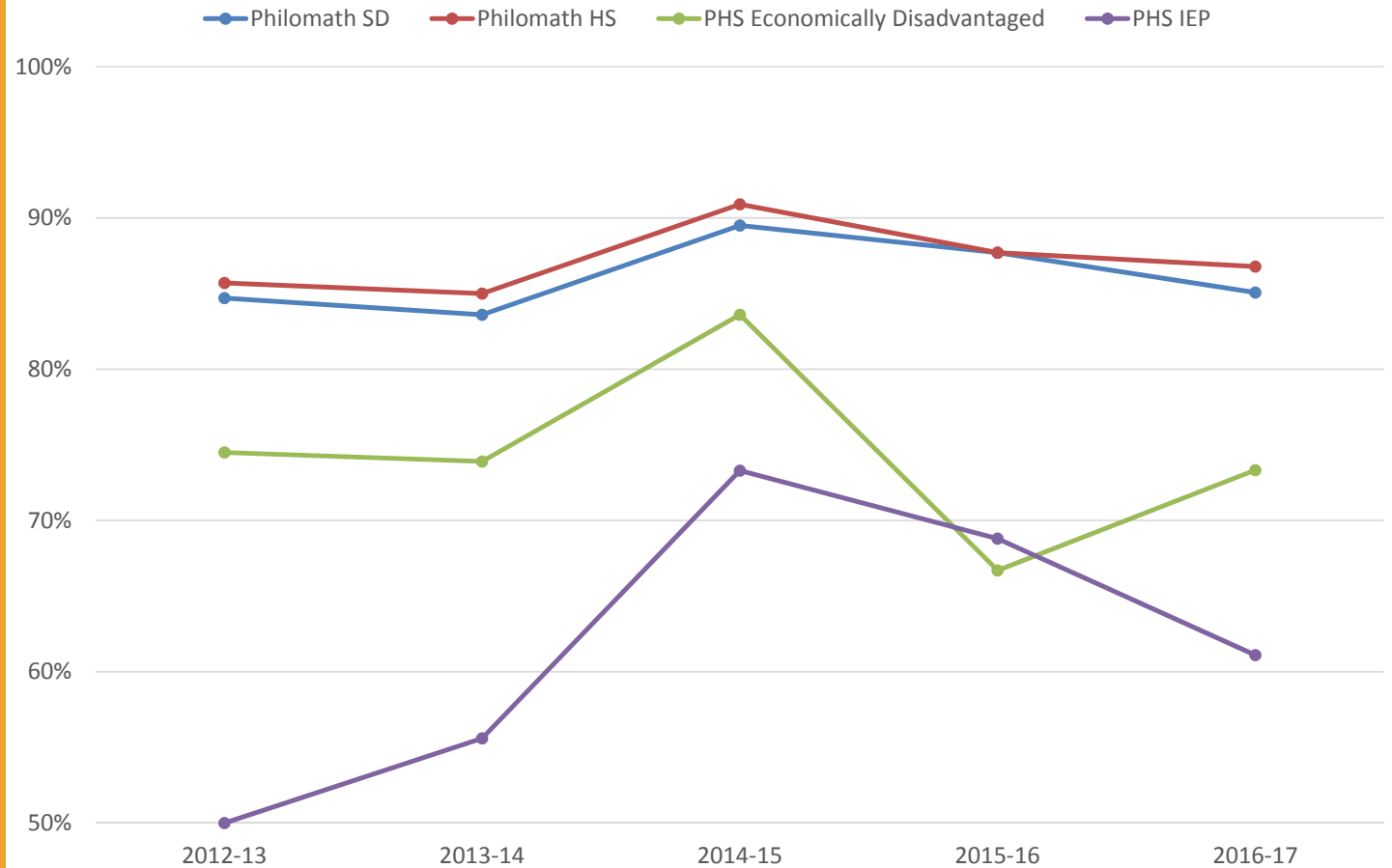
# 11<sup>th</sup> Grade Student Attendance



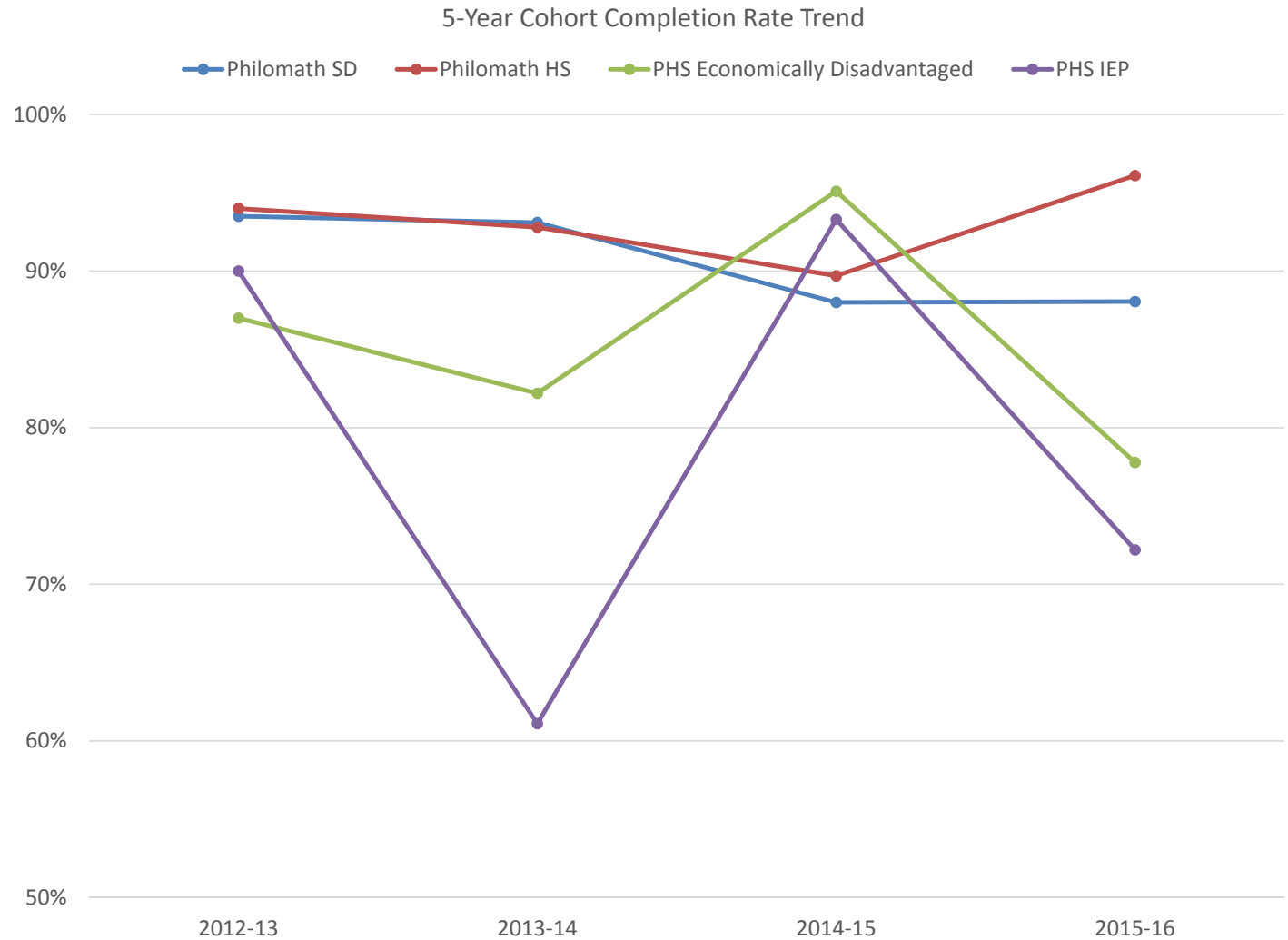
81% of juniors  
attend more than  
90% of days

# 4-Year Cohort Graduation Rate

4-Year Graduation Rate  
Trends over Time



# 5-Year Cohort Completion Rate







Philomath School District

**Vision: Graduate EVERY student and transition each into a job, training, or college.**

