



KVCS Family Forum- School Start up

Kings Valley Charter School
August 19, 2020

Topics



- Re-Cap from July Board Meeting
- What to expect in the coming weeks
- Schedules/Structure - CDL and Hybrid
 - Elementary -- A day in Elementary School
 - MS/HS -- A day in the Middle and High School
- Technology
- Website Updates and Important info.
- Questions

Re-cap from July KVCS Board meeting

- ▶ **School starts as Comprehensive Distance Learning.** Onsite instruction delayed for at least 4 weeks for PreK-3rd grade and 8 weeks for 4th-12th grade,
- ▶ Re-evaluate at September 28th Board Meeting to consider the addition of PreK-3rd grade Hybrid Model, reintroduction of preschool and possible small group instruction if metrics allow for exceptions and depending on health department guidance.
- ▶ Re-evaluate at September 28th Board Meeting to consider the addition of Learning Resource Center at school to provide additional support if requested by families and students.
- ▶ Re-evaluate at October 22nd Board Meeting to consider All School on Hybrid Model if metrics allow and potential for PreK-3rd grade and preschool moving to 4 days per week.
- ▶ **Start date changed to September 8th** to allow for additional staff training and preparation. Calendar will be reviewed before the December board meeting to determine if additional days are necessary.

Starting up!



Week of August 24th

- Teacher and staff scheduled in-service
- Coffee with Mr. E --Office hours to join me in a virtual coffee/tea time. - Less formal opportunity to check in and ask questions.

Week of August 31st --

- Back to school Orientation -- Elementary, Middle School, High School. Parents/guardians and students will hear information on courses, schedules and new learning management system (Canvas Training)
- Supply deliveries -- Supplies include:
 - Elementary Classroom Supply Starter Kit, Middle and High School Supplies
 - Chromebook deliveries (upon request)
 - Meal deliveries (details on meal deliveries will be available soon)

Week of September 8th --

- School begins with comprehensive distance learning -
- Parents/guardians and students can expect a gradual start to the year during this first week with more training on the learning platforms, reconnecting with classmates and teachers and opportunities to ask questions.



Comprehensive Distance Learning (CDL) Summary

From Spring 2019 to Fall 2020: *Key Shifts*

Instruction

- Increased daily learning time
- Focus on Teacher-Facilitated learning time
- English language support and SPED support provided through real-time opportunities

Relationship & Connection

- Daily real-time check-ins between staff/student
- Daily peer interaction
- Daily attendance

Family Engagement & Communication

- Family/parent virtual connections at least 4 x per year
- Family & student feedback at least 3 x per year

INSTRUCTIONAL TIME

2020-21 SCHOOL YEAR

TEACHER-FACILITATED $\geq 50\%$ + APPLIED LEARNING $\leq 50\%$ + OTHER

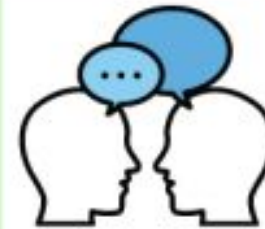


Synchronous/Asynchronous learning experience planned and guided by a licensed teacher.

Synchronous opportunities, either on-site or off-site, must be provided daily and may include full group instruction, peer interaction, two-way communication, small group breakouts, or individual office hours.



Learning experiences that allow for students to apply knowledge and skills that extend from the teacher-facilitated learning. Students have access to instructional support during applied learning activities, provided by educational assistants, teachers, and/or related service providers.



- Teacher Professional Development
- Parent/Family Contacts (guidance, support, communication, and parent/teacher conferences)

Instructional Delivery

Asynchronous

Students learning at their own pace. Through videos, projects, etc.



Pre-recorded lectures, readings and podcasts.



Video demonstrations and worked problems.



Practice problems, discussion questions, and other activities.



Quizzes, assignments, and applications.



Analytical groups.

Synchronous

Students learning together through online classes and video conferencing



Virtual classrooms and live webinars.



Interaction between students in breakout groups or group presentations.



Checking in with students via instant messaging or video conferencing.



Focused activities with real-time interaction.



Office hours.

ADVANTAGES

- Scalability of delivery.
- Learner controls the pace.
- Combine the knowledge of multiple experts into one learning experience.
- Learning can be built upon and improved.
- Allows individualizations of learning.

- Promote feelings of belonging and connection.
- Motivate students who need face-to-face instruction, including some students with disabilities, the individual needs for whom must be prioritized in our planning.
- Engage reluctant learners with caregivers to coach attendance.
- Allow students to ask questions real-time and share ideas and concerns.



Class Schedules

- Elementary Schedule Examples Schedule--
Athena Lodge - Head Teacher
- Middle and High School Example Schedules --
Scott Castle - Head Teacher



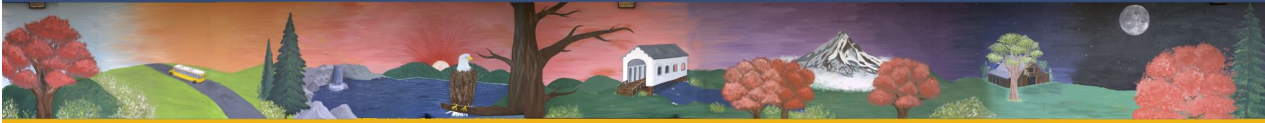
Class Schedules

Phase 1 – Elementary Comprehensive Distance Learning (100% at home, 0% at KVCS)

Mrs. Lodge and Mrs. Gonzalez's Distance Learning

| | 9:00-9:15 | 9:15-10:00 | 10:15-10:30 | 10:30-11:00 | 11:15-11:45 | 11:45-12:45 | 1:00-1:30 | 1:30-3 |
|-----------|-----------|------------|---------------|-------------|-------------|-------------|---------------------|-------------------------------|
| Monday | Community | Literacy | PE Stretching | Math | Theme | Lunch | Music | Office Hours/ small Groups |
| Tuesday | Community | Literacy | PE Stretching | Math | Theme | Lunch | Chinese | Office Hours/ Small Groups |
| Wednesday | Community | Literacy | PE Stretching | Math | Theme | Lunch | Health/ Wellness | Office Hours/ Small Groups |
| Thursday | Community | Literacy | PE Stretching | Math | Theme | Lunch | Gardening | Office Hours/ Small Groups |
| Friday | Community | Literacy | PE Stretching | Math | Theme | Lunch | Chinese | Office Hours/ Small Groups |

Schedule



Elementary

- Attendance will be taken daily
- All subjects are required, although students may complete them at their own pace
- Students will receive “grades” of Exceeds, Meets, or Developing for their coursework
- Daily Schedule: 9 to 2 with office hours until 3 (not all work will be online and “live”)
- 2x per week - Chinese, 1X per week - Music and Gardening
- Elementary teacher’s class schedules will be available on the website soon.
- Class placements are complete -- Families will hear from teachers next week, if they have not already
- Lessons will be recorded and posted on our Learning Management Platform (Canvas)



Middle and High School

General Middle/High School Schedule info

Attendance will be taken daily for each class;
students will receive letter grades

- A days / B days
- 5 days a week
- 9:00AM - 3:00PM
- 9:00-12:30 - Instruction online
 - 12:30-1:30 - Lunch
 - 1:30-3:00 - office hours (A few courses happen from 1:30-2)
 - 35 minute classes
 - 10 minutes between classes
- All instruction will be recorded (viewable at any time)
- Schedules will be available soon (check your email)



Middle and High School Schedule

A day: 9:00-9:30 9:40-10:15 10:25-11:00 11:10-11:45 11:55-12:30 12:30-1:30 1:30-3:00

| | | | | | | | |
|-----------|-------------|--------------|--------------|--------------|---------------------|-------|----------------------------|
| Scott | 6 Advisory | 6 Math | (Alg 1a?) | 7 Math | 8 Math | Lunch | Office/Tutor |
| Michaela | 7 Advisory | 7 Hum. | 8 Hum | 6 Hum | | Lunch | Office/Tutor |
| Inger-Lis | 8 Advisory | 8 Science | 6 Science | (AP) / Bio | 7 Science | Lunch | Office/Tutor |
| | | (HS Block 1) | (HS Block 3) | (HS Block 2) | | | |
| Ronnie | 9 Advisory | | | | HS PE (elective) | Lunch | MS PE 1:30-2:00 |
| Adam | 10 Advisory | 11/12 AP Lit | 11 Launch! | | 12 Launch! | Lunch | Office/Tutor |
| Tamara | 11 Advisory | 9 Launch! 4 | Italian 2 | | | Lunch | Fr 2 (1:30-2) Office/Tutor |
| Will | 12 Advisory | Writing Lab | | AP H Geog | | Lunch | Office/Tutor |
| Dan | | Geometry | Algebra 1 | AP Physics | | Lunch | Office/Tutor |
| Michael | | | 7 Chinese | 8 Chinese | 6 Chinese | | |
| Diana | | | | | (Lisa – Credit Rec) | | HS Cooking 1:30-2:00 |

Lisa office hours – 1:30-3:00

B day: 9:00-9:30 9:40-10:15 10:25-11:00 11:10-11:45 11:55-12:30 12:30-1:30 1:30-3:00

| | | | | | | | |
|-----------|-------------|---------------|--------------|--------------|---|-------|--------------------------------|
| Scott | 6 Advisory | 6 Math | | 7 Math | 8 Math | Lunch | Office/Tutor |
| Michaela | 7 Advisory | 7 Hum. | 8 Hum | 6 Hum | | Lunch | Office/Tutor |
| Inger-Lis | 8 Advisory | 8 Science | 6 Science | Earth Sci | 7 Science | Lunch | Office/Tutor |
| | | (HS Block 5) | (HS Block 7) | (HS Block 6) | | | |
| Ronnie | 9 Advisory | 11/12 PE/H | 7 PE/H | 8 PE/H | 6 PE/H | Lunch | Office/Tutor |
| Adam | 10 Advisory | 9 English Lit | 10 World Lit | | | Lunch | Office/Tutor |
| Tamara | 11 Advisory | 10 Launch! | French1 | French3 | Italian 1 | Lunch | Ital 3(1:30-2) Office/Tutor |
| Will | 12 Advisory | | Hum Survey | AP H Geog | | Lunch | Office/Tutor |
| Dan | | Algebra 2 | | Pre-calc | | Lunch | Calculus |
| Michael | | | | | | | |
| Diana | | | | | HS Online Elective (Odysseyware) Cred Rec | | MS Cooking 1:30-2:00 Cul 1 & 2 |



Updates and Important Information

- IEP Services will be provided as they were in the Spring
 - More comprehensive as with general Ed
 - Majority will be teacher-led and guided
- Website updates- our website now has “CDL information” with dropdown menus. You can get to this from the pop-up on the home screen, or the first item on the home page.
<https://www.philomathsd.net/kings-valley-home/about/2020-2021-school-planning-information>
- Technology Distribution and Survey
- Supplies-- All Students can/will receive supplies
- Working with district and board to consider the new provisions for limited, in-person instruction.
- Equity Team will be reaching out soon.
- Addition of a Student and Family Support Specialist
- Technology Support Staff

Comprehensive Distance Learning Information for KVCS

BACK-TO-SCHOOL INFORMATION

Meetings, forums, Q&A sessions, and other online gatherings will be listed here.

We are currently planning:

Thursday, Aug. 20, 7pm Zoom Q&A session, with FB livestream

Coffee with Mr. E - informal, virtual opportunity to check in, ask questions (week of Aug. 24)

-Parent information sessions

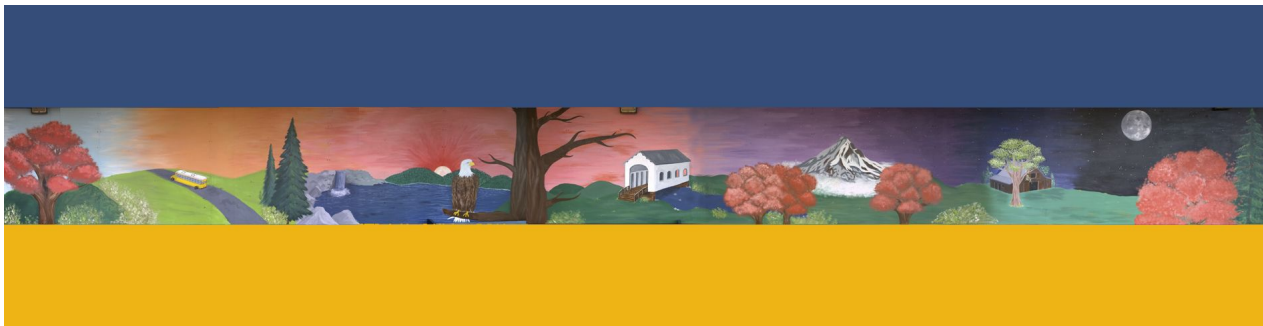
-"Open House" zoom meetings

-"Welcome Back" school supply pick-up at KVCS (deliveries will be scheduled also) - Week of Aug. 31

| | |
|---|---|
| > | SCHOOL-WIDE EXPECTATIONS |
| > | SCHOOL SUPPLIES |
| > | DELIVERIES |
| > | SCHOOL DAY SCHEDULES |
| > | PRESCHOOL |
| > | NUTRITION/SCHOOL BREAKFAST & LUNCH |
| > | SOCIAL-EMOTIONAL SUPPORT/RESOURCES |
| > | CANVAS INFORMATION AND SUPPORT |
| > | GOOGLE/CHROMEBOOK INFORMATION AND SUPPORT |



Questions?



Contact Jamon Ellingson
jellingson@kvschool.org or (920) 659-5667



Thank you!

Thank you everyone for your patience, flexibility, understanding and most of all your support and feedback. We are jumping into a new, but exciting opportunity for growth. This is our time to create partnerships with each other that will strengthen the educational experience for our youth.

Please be sure to reach out to us for support if needed. As parents, you know what works and what doesn't work for your student. We want to hear your ideas!